

High-speed bearing for electric propulsion system

Application & Market Segment

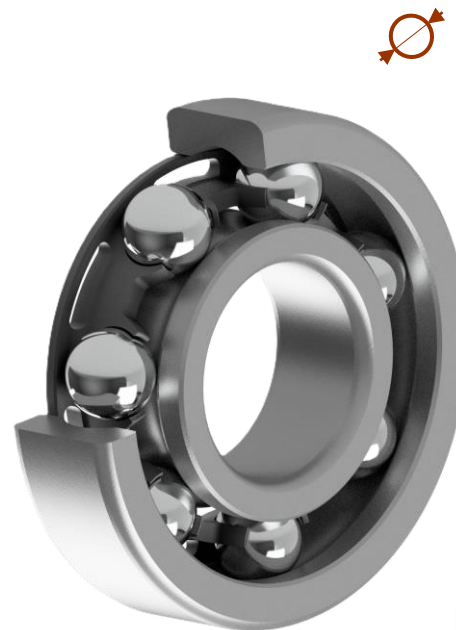
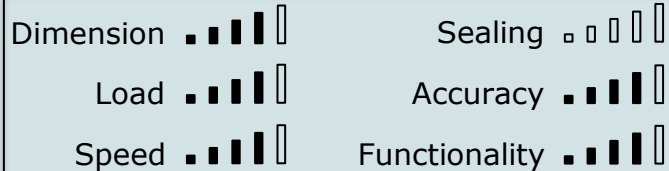
- Electric mobility
- Electric propulsion system

Product

- Bearing ABEC 5
- Production JESA CH

Advantages

- High speed
- High load capacity
- Cage PA4.6 CF15 with carbon fiber
- Temperature from -50°C to +160°C



∅ 72mm

∅ 30mm

Steel 100Cr6

19 mm

∑ 10'000 parts/year

